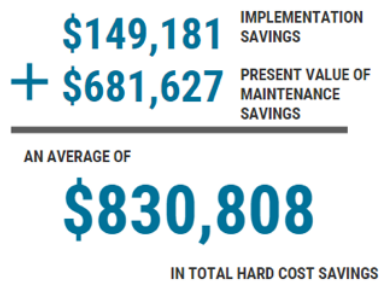


InRule® for Microsoft Dynamics® 365

Customize Complex Rules, Calculations, and Workflows—Without Code



*Total savings calculated based on average savings of implementation and maintenance as reported by survey respondents, calculated over a 7-year life span, using an 8% discount rate to compensate for the time value of money (TVM). Source: 2017 IUC Annual Survey

Trusted for Mission-Critical Applications

InRule® for Microsoft Dynamics® 365 provides intuitive software to write, manage, share and execute rules and calculations that support real world scenarios. By leveraging InRule's enterprise-grade integration with Dynamics, complex decision logic that traditionally requires platform customization and custom code can be managed by the business teams who understand the requirements best. InRule allows you to reduce workload on your IT staff, limit the risk of misunderstood requirements, and simplify deployment of automated decisions into your organization.

To complete the experience, our intuitive rule authoring application is tightly integrated with Microsoft Dynamics 365. This makes the user experience familiar and allows users to go beyond basic requirements to support real world scenarios including routing, pricing, eligibility, and claims adjudication.

MANAGE COMPLEX RULES AND SAVE MONEY

With InRule for Microsoft Dynamics 365, changes can be made to systems more quickly as well as tested with real-world data to ensure greater accuracy, improving time to market and often reducing costs. A recent survey found that InRule users experienced an average savings of \$830,808.

Rules for Real World Scenarios

Calculations and complex rules for real world scenarios such as routing, pricing, and eligibility are made simple with InRule for Microsoft Dynamics 365. By automatically running rules when Dynamics objects are created or updated, business users are able to build support for a vast array of business scenarios without bringing in technical resources to build custom JavaScript or code. InRule for Microsoft Dynamics 365 delivers capabilities that support real world scenarios.

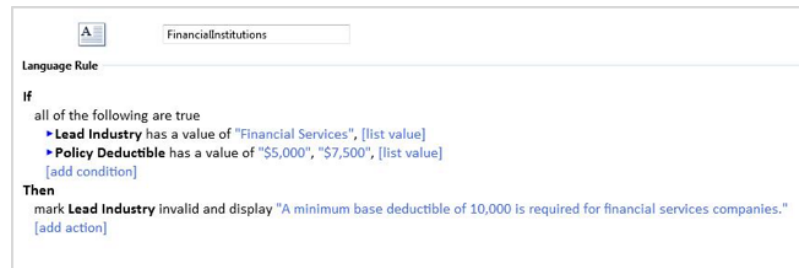
INTUITIVE RULE AUTHORING DESIGNED FOR DYNAMICS 365

Authoring rules is easy using irX® for Microsoft Dynamics 365, InRule's authoring extension for Microsoft Dynamics 365. Using the tooling provided in the extension, users can import standard or custom Dynamics entities, fields, and relationships into the Rule Application simply by connecting to their instance of Dynamics and selecting the items in a wizard-style interface. Once the schema is imported, rules and calculations may be written using

Business Language, Decision Tables, and an Excel-like Syntax depending on the desired functionality of the rules and the preferences of the rule authors. Rule authoring and management is tightly integrated with Microsoft Dynamics 365, making the user experience familiar and easy to learn.

Geography- and Time-Specific Rules for Configurability, Agility

Geography-sensitive rules can easily be deployed to handle situations where rules vary due to local regulatory requirements (such as tax calculations) or other regional considerations. Rules that are valid only during a specific time period—for example during a sales promotion or period of heavy regulatory change—are also easy to author and deploy.



» Business Language Authoring makes it easy to write and review rules.

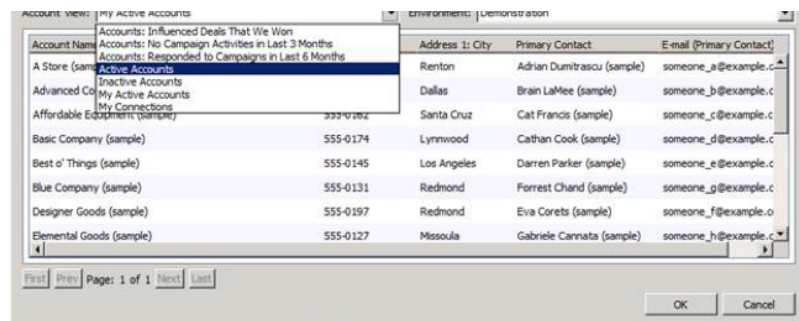
Maintain Higher Quality Rules and Calculations

COMPLEX CALCULATIONS FOR PRICING, PROMOTIONS AND MORE

InRule’s library of more than 225 built-in functions and the ability to write custom functions make it easy to build and maintain the complex calculations associated with pricing, promotions and more.

UNIT AND REGRESSION TESTING FOR ACCURACY

Users can easily test business rules using data directly from Microsoft Dynamics 365, ensuring that tests accurately validate the logic created within the application. When testing, users can identify records from any system view of the selected Entity type to use as the foundation for the test, eliminating the need to manually enter test data.



» Testing using your CRM data is easy.

To learn more about InRule or to request a free trial, visit www.inrule.com

Capabilities of InRule

- » Complex conditional logic
- » Complex calculations
- » 225+ built-in functions
- » User defined functions
- » Business language authoring
- » Decision tables
- » Rule flow
- » Rule versioning
- » Testing, debugging, and tracing with your CRM data
- » Support for lookups and one-to-many relationships plus aggregates like sum, min, max, and average
- » Robust rule management
- » Role-based security
- » Support of Microsoft Dynamics CRM 365 v9.0 Online and v9.0 On-Prem

Microsoft Partner
 Gold Application Development
 Silver Customer Relationship Management